



**WHEN YOUR MISSION CRITICAL PROJECT CAN'T FAIL**

**CAPABILITIES STATEMENT**  
**SBA 8(a) CERTIFIED, TRIBAL OWNED, ISBEE**



**\$6M Bonneville B-Branch Fish Ladder Erosion Repair, USACE**

**Description:** Recovery and placements of loose rocks along spillway below Bonneville Dam, OR.



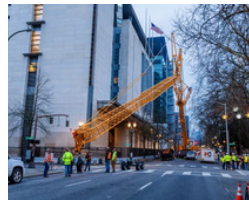
**\$15.9M Lake Washington Shipping, USACE**

**Description:** Infrastructure upgrade project at the Hiram M. Chittenden Locks, Seattle, WA.



**\$4.5M Mud Mountain Dam Fish Passage Facility, USACE**

**Description:** Upgrade critical infrastructure elements required at MMD Fish Passage Facility. Enumclaw, WA



**\$7.3M Hatfield Elevators, GSA**

**Description:** Modernization of Elevators in 17-story courthouse building located in downtown Portland, OR.

**PRIMARY NAICS CODE**

236220 - Commercial and Institutional Building Construction

**COMPLETED PROJECTS IN ALL LISTED NAICS CODES**

- 221111 - Hydroelectric Power Generation
- 221114 - Solar Electric Power Generation
- 221310 - Water Supply and Irrigation Systems
- 221320 - Sewage Treatment Facilities
- 236210 - Industrial Buildings
- 237110 - Water & Sewer Line
- 237130 - Power, Comm. Line & Structures
- 237310 - Highways, Streets, & Bridges
- 237990 - Other Heavy Civil & Infrastructure
- 238110 - Poured Concrete
- 238120 - Structural Steel and Precast Concrete
- 238220 - Plumbing & HVAC
- 238190 - Foundation, Structure, & Building Ext.
- 332312 - Fabricated Structural Metal Manuf.

**TI-RJS BONDING LIMIT**

\$35M Single | \$80M Aggregate

**RJS BONDING LIMIT**

\$40M Single | \$80M Aggregate

**TI BONDING LIMIT**

\$25M Single | \$50M Aggregate

**TI-RJS UEI**

W85LDSNXH1Y9

**CAGE CODE**

99ZP9



**FEDERAL CLIENTS SERVED**



US Army Corps of Engineers®



**CONTACT TRIBAL 1**

Point of Contact: Doug Wells  
 (719) 352-6409  
 info@tribal.one | www.tribal.one



**CONTACT RJS**

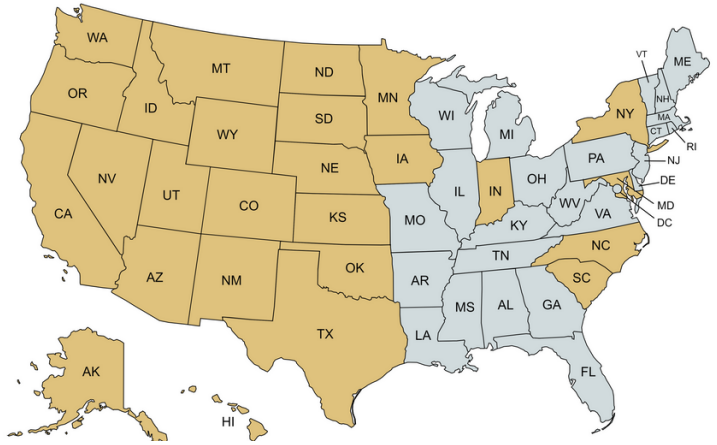
Point of Contact: Richard Sevigny  
 (509) 452-0857  
 rjs@rjsconst.com | www.rjsconst.com



**OFFICE LOCATIONS**

Centennial, CO  
 Colorado Springs, CO  
 Columbia, MD  
 Eugene, OR  
 Grants Pass, OR  
 North Bend, OR  
 Portland, OR  
 North Charleston, SC  
 Bremerton, WA  
 Seattle, WA  
 Yakima, WA  
 Spokane, WA

**PROJECTS COMPLETED IN THE FOLLOWING STATES**



**KEY**

■ Previously performed work

**TRIBAL 1 EXPERIENCE**



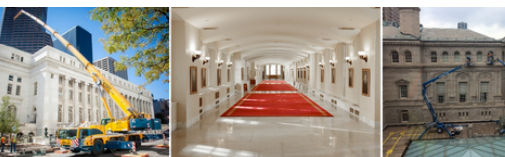
**\$14.5M Alpha Ramp Repair, USACE Ft. Carson**



**\$12M Replace Generators, Schriever Space Force**



**\$7M D/B Robotics Test Facility, NIST**

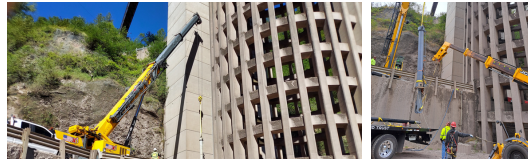


**\$13.7M Byron White Courthouse Historic Renovation, GSA**



**\$1.3M Western Processing Center (WPC) Relocation, ACE-IT**

**RJS EXPERIENCE**



**\$566.9K Mud Mountain Dam Radial Gate 1, USACE**



**\$4.1M Bonneville Powerhouse 1 Control Room Fire Protection, USACE**



**\$767K Fish Ladder Working Area Remodel, LWSC**



**\$7.8M Grand Coulee 3rd Powerplant Roof Replacement, BOR**



**\$1.3M RASP Antenna Installation Wahiawa, ATC**